



VILLAGE ESTATES



93 Main Road, Sidcup, Kent DA14 6ND

Tel: 0208 302 1002

www.village-estates.com

Email: sidcup@village-estates.com



**EXTENSIVELY REFURBISHED
THROUGHOUT**

**LOCATED ON THE EVER POPULAR
COUNTY ROADS**

**10 YEAR VAILLANT BOILER
GUARANTEE**

**EXCELLENT ACCESS TO LOCAL
AMENITIES**

**10 YEAR DOUBLE GLAZING
WARRANTY**

**3 YEAR MANUFACTURE WARRANTY
ON ALL APPLIANCES**



**15 Sussex Road
Sidcup, DA14 6LG**

£450,000

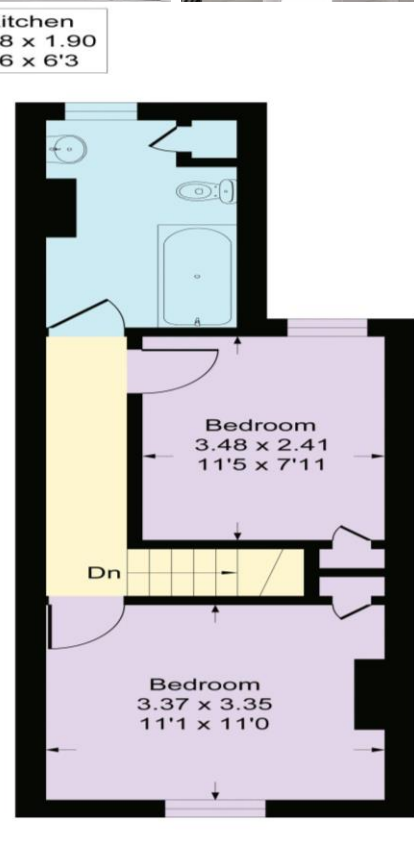
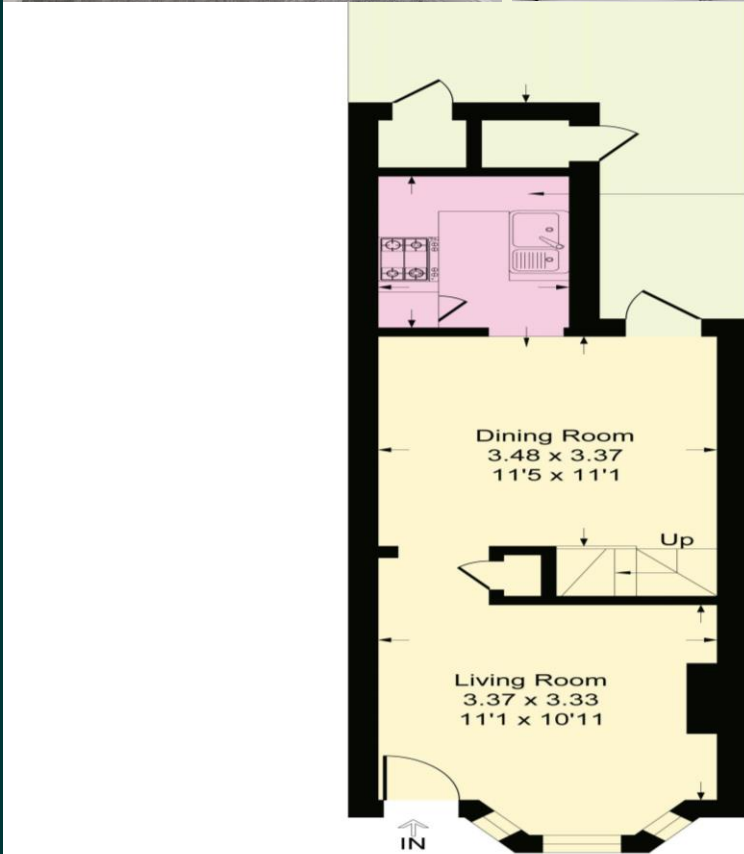
Desired by modern families, a period home with all new fixtures and fittings creating ultimate convenience. Offered with no forward chain and ready for immediate occupation. Sussex Road sits close to the high street with an array of cafes, restaurants and other amenities. With summer fast approaching, you could be enjoying the south east facing rear garden in next to no time.

EPC RATING: C

COUNCIL TAX BAND: C

TENURE: Freehold

LEASE TERM: Not Applicable



CONSUMER PROTECTION FROM UNFAIR TRADING REGULATIONS 2008

Please note that any services, heating system or appliances have not been tested, and no warranty can be given or implied as to their working order. You are advised to obtain verification from your solicitor or surveyor. References to the tenure of a property are based on information supplied by the seller. We have not had sight of the title documents and a buyer is advised to obtain verification from their solicitor. Items shown in photographs are not included unless specifically mentioned within the sales particulars, but may be available by separate negotiation. Whilst every attempt has been made to ensure the accuracy of the floor plan contained here, measurements of doors, windows, rooms and any other items are approximate and no responsibility is taken for any error, omission, or mis-statement. We advise you to book an appointment to view before embarking on any journey to see a property, and check its availability. The accuracy of these details are not guaranteed and they do not form part of the contract.